

CONTAINER ACCESSORIES

STEP 3: Pick Your Accessories

Below is a quick reference chart to tell you what accessories are suitable for your container. Detailed accessory descriptions are on the next several pages. Ask your sales representative if you don't see what you're looking for.

• indicates item is suitable for particular container

CONTAINER ACCESSORIES		LONG DIVIDERS	SHORT DIVIDERS	SHELF ASSEMBLY W/ BRACKETS	8" TRAY ASSEMBLY	5" TRAY ASSEMBLY	DEHUMIDIFIER	HAZMAT ACCESS PANEL	STORAGE SKIDS	MOBILITY CASTER SETS	TOW BAR ASSEMBLY	MOBILITY WHEEL SETS	SHELF CARGO RESTRAINING NET w/SHELF BRACKET HARDWARE KIT	SHELF CARGO RESTRAINING NET w/6/E CARGO RING HARDWARE KIT
ISU 90 4D 56X02	P/N	50002-145 (2 per container)	NA	50002-117	•	•	•	•	•	•	•	•	•	•
	NSN	8145-01-382-1790		8145-01-382-1888										
ISU 90 FC 4D 56X10	P/N	NA	NA	NA	NA	NA	•	•	•	•	•	•	NA	NA
	NSN													
ISU 90I 4D 56X16	P/N	50002-145 (2 per container)	NA	50002-134	•	•	•	•	•	•	•	•	•	•
	NSN	8145-01-382-1790		8145-01-384-9270										
ISU 90KC 4D 56X20	P/N	50002-145	50002-328	50002-117	•	•	•	•	•	•	•	•	•	•
	NSN	8145-01-382-1790	8145-01-423-0710	8145-01-382-1888										
ISU 90KCI 4D 56X33	P/N	50002-145	50002-328	50002-134	•	•	•	•	•	•	•	•	•	•
	NSN	8145-01-382-1790	8145-01-423-0710	8145-01-384-9270										
ISU 90EO 4D 56X45	P/N	50002-188	NA	50002-189	•	•	•	•	•	•	•	•	•	•
	NSN	8145-01-390-4408		8145-01-384-9266										
ISU 90EO 1D 56X21	P/N	NA	NA	NA	NA	NA	•	•	•	•	•	•	NA	NA
	NSN													
ISU 90EO 2D 56X36	P/N	NA	NA	NA	NA	NA	•	•	•	•	•	•	NA	NA
	NSN													
ISU 90EO 2D 56X29	P/N	NA	NA	NA	NA	NA	•	•	•	•	•	•	NA	NA
	NSN													
ISU 90IEO 1D 56X66	P/N	NA	NA	NA	NA	NA	•	•	•	•	•	•	NA	NA
	NSN													
ISU 90IEO WRSK 3D 56X76	P/N	50002-203	NA	50002-227	•	•	•	•	•	•	•	•	•	•
	NSN													
ISU 90I WRSK 4D 56X75	P/N	50002-145 (2 per container)	NA	50002-117	•	•	•	•	•	•	•	•	•	•
	NSN	8145-01-382-1790		8145-01-382-1888										
ISU 80 4D 56X80	P/N	50002-326 (2 per container)	NA	50002-117	•	•	•	•	•	•	•	•	•	•
	NSN	8145-01-512-8602		8145-01-382-1888										
ISU 70KC 4D 56X50	P/N	50002-328	50002-329	50002-117	•	•	•	•	•	•	•	•	•	•
	NSN	8145-01-382-1935		8145-01-382-1888										
ISU 70KCA 4D 56X88	P/N	50002-328	50002-499	50002-200 (Short Side)	•	•	•	•	•	•	•	•	•	•
	NSN	8145-01-423-0710		50002-117 (Tall Side)										
ISU 60 4D 56X03	P/N	50002-158	NA	50002-117	•	•	•	•	•	•	•	•	•	•
	NSN	8145-01-382-1935		8145-01-382-1888										
ISU 60EO 4D 56X09	P/N	50002-197 (2 per container)	NA	50002-189	•	•	•	•	•	•	•	•	•	•
	NSN	8145-01-384-9253		8145-01-384-9266										
ISU 72.5 2D 56X04	P/N	50002-126	NA	50002-127	•	•	•	•	•	•	•	•	•	•
	NSN	8145-01-384-925		8145-01-384-9278										
ISU 60.5 2D 56X12	P/N	50002-129	NA	50002-127	•	•	•	•	•	•	•	•	•	•
	NSN	8145-01-384-9258		8145-01-384-9278										
ISU 90 Laundry 56X02-497	P/N	NA	NA	NA	NA	NA	•	NA	•	•	•	•	NA	NA
	NSN													
ISU 90KCI Dog Kennel 56X33-160	P/N	NA	NA	NA	•	•	NA	•	•	•	•	•	•	NA
	NSN													
ISU 90EO 1D Wpns Room 56X21-XXX	P/N	NA	NA	NA	NA	NA	•	•	•	•	•	•	NA	NA
	NSN													
ISU 96 ATV 4D 56X79	P/N	NA	NA	NA	NA	NA	•	•	•	•	•	•	•	NA
	NSN													
ISU 65I ATV 4D 56X94	P/N	NA	NA	NA	•	•	NA	•	•	•	•	•	•	NA
	NSN													
ISU 96RC 50X48-001	P/N	NA	NA	NA	NA	NA	NA	•	•	•	•	•	NA	•
	NSN													
ADR-300 56X49	P/N	NA	NA	NA	NA	NA	NA	•	•	NA	NA	•	NA	NA
	NSN													
ISU 90 HSC 56X90	P/N	NA	NA	NA	NA	NA	•	NA	•	•	•	•	NA	NA
	NSN													

MOBILITY CASTER SETS



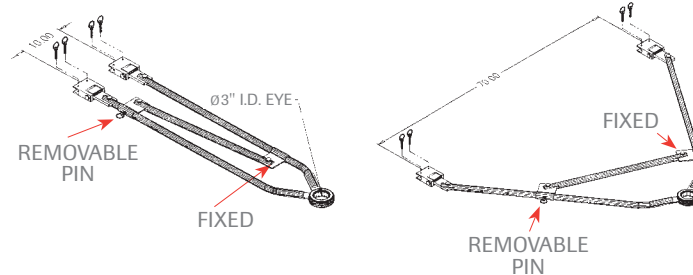
P/N	NSN	GSA	DLA
60037-001	8145-01-384-9260	•	•
WHEEL ASSEMBLY WEIGHT	SHIPPING WEIGHT	HEIGHT	
47 lbs. /each	240 lbs./set	12.75"	

- Set includes 4 wheel assemblies
- Can move up to 12,000 lbs.
- Casters attached with quick-release pins through detent rails
- Maximum versatility for moving containers and pallets
- Easy loading and unloading for aircraft equipment cargo handling systems
- Eliminates need for forklift vehicles

ISU® MOBILITY TOW BAR

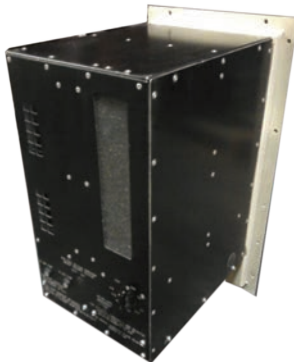


P/N	NSN	WEIGHT	GSA	DLA
60040-001	8145-01-385-7290	70.4	•	•



- Utilized with Mobility Caster Set for towing containers in warehouse and hard-stand areas at speeds not to exceed 5 mph
- Adjustable for use on edges of all model ISU® Containers (48"W, 88"W, or 108"W)
- Drilled on all four sides
- Instructions included for required drilling to install

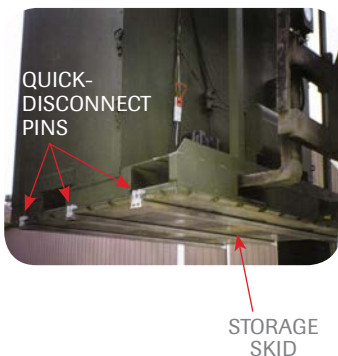
DEHUMIDIFICATION UNITS



P/N	NSN	GSA	DLA
60398-002 Field/Customer Installed	8145-01-484-2922	•	•
60398-001 for ISU KC Models - Factory Installed			
60398-008 for ISU Models- Factory Installed			
DIMENSIONS		WEIGHT	
17.25" X 12.5" X 9.63"		27 lbs.	

- Includes small drive motor and belt to rotate wheel, an integral humidistat and a customized printed circuit board
- Delivers 50 scfm and removes 28.6 lbs. of H₂O 24-hours at 90°F
- Can be configured for 115V/60Hz or 220V/50/60Hz; 1PH; .935kW power required
- Requires 2 air filters
- Accessories available - surface mounting pan, duct transition adapter, light weight flexible duct and heavy duty power cord

ISU® STORAGE SKID KIT



P/N	NSN	WEIGHT	GSA	DLA
60168-001	8145-01-467-6574	60 lbs.		

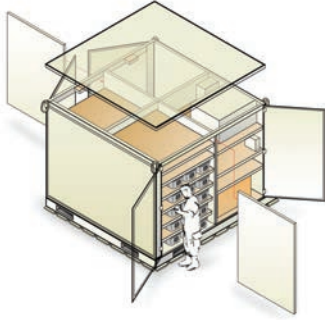


- Keeps container off ground and protects bottom from foreign object damage
- Eliminates shoring/dunnage requirements
- Allows pickup from end by 72" tined forklift (loading 2.5-ton truck, 5-ton truck, etc.)
- Skid inserts through container edge rail and pins in place with quick-disconnect pin
- Height of skid gives forklift accessibility to bottom of container when forklift has 72" tines

CONTAINER ACCESSORIES

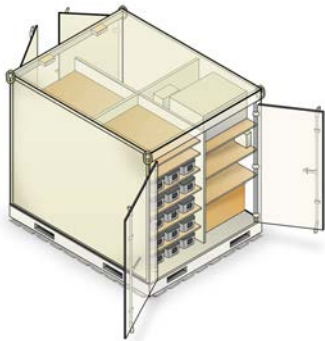
STEP 3: Pick Your Accessories

ISU® DIVIDERS



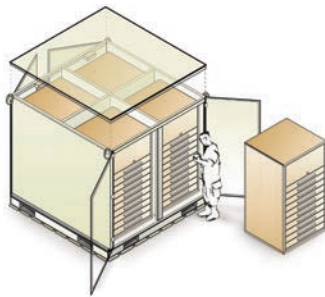
P/N	NSN	ITEM	SIZE	WEIGHT	CONTAINERS	GSA	DLA
50002-145	8145-01-382-1790	LONG DIVIDER	38.38 X 80	27.3 lbs.	ISU® 90, 90I, 90KC, 90KCI	•	•
50002-326	8145-01-512-8602	LONG DIVIDER	38.38 X 72	21.5 lbs.	ISU® 80	•	•
50002-158	8145-01-382-1935	SHORT DIVIDER	38.38 X 48	16.3 lbs.	ISU® 60, 60.5, 72.5	•	•
50002-129	8145-01-384-9258	DIVIDER	38.78 X 48	14.3 lbs.	ISU® 60.5		
50002-126	8145-01-384-9255	DIVIDER	38.78 X 60	19.2 lbs.	ISU® 72.5	•	
50002-188	8145-01-390-4408	DIVIDER	48 X 80	29.5 lbs.	ISU® 90EO 4 DR		•
50002-203		DIVIDER	34.26 X 80	24.4 lbs.	ISU® 90IEO 3 DR		
50002-197	8145-01-384-9253	DIVIDER	48 X 50	18.8 lbs.	ISU® 60EO 4 DR	•	
50002-328	8145-01-423-0710	DIVIDER	38.38 X 60	20.5 lbs.	ISU® 90KC, 90KCI, 70KC, 70KCA	•	•
50002-329	8145-01-423-0709	DIVIDER	38.38 X 40	13.6 lbs.	ISU® 70KC, 70KCA		•
50002-499		DIVIDER	30.38 X 40	10.8 lbs.	ISU® 80, 70KCA		

ISU® SHELVES, BRACKETS & STRAP ASSEMBLIES



P/N	NSN	ITEM	SIZE	WEIGHT	CONTAINERS/SHELTERS	GSA	DLA
50002-117	8145-01-382-1888	SHELF ASSEMBLY	38.50 X 50.06	35.6 lbs.	ISU® 90, 90KC, 80, 70KC, 60	•	•
50002-127	8145-01-384-9278	SHELF ASSEMBLY	38.94 X 50.06	35.9 lbs.	ISU® 60.5, 72.5	•	•
50002-134	8145-01-384-9270	SHELF ASSEMBLY	38.50 X 47.06	33.6 lbs.	ISU® 90I 4-DR, 90KCI 4-DR	•	•
50002-189	8145-01-384-9266	SHELF ASSEMBLY	48.50 X 40.06	35.9 lbs.	ISU® 90EO, 60EO	•	•
50002-227		SHELF ASSEMBLY	34.38 X 40.50	21.2 lbs.	ISU® 90IEO 3-DOOR		
50002-200		SHORT SHELF ASSY	30.50 X 50.06		ISU® 70KCA	•	
86015-503	5340-01-309-8696	SHELF BRACKETS		.02 lbs.	(shelf assembly includes 4 brackets)	•	
86060-001		TIE-DOWN STRAP ASSY			(w/ratchet buckle)		
86060-375	5340-01-310-4048	TIE-DOWN STRAP ASSY		1.5 lbs.	FOR ISU® CONTAINERS	•	
86060-006	8145-01-486-2508	TIE-DOWN STRAP ASSY			FOR MOBILITY SHOP CONTAINER	•	•
86060-008	8145-01-4862507	TIE-DOWN STRAP ASSY			FOR M105 TRAILER SHOP CONTAINER		
86060-010	8145-01-486-2510	TIE-DOWN STRAP ASSY			AS REQUIRED	•	•

SMALL PARTS CABINETS



CONTAINER	PART #	DESCRIPTION	WEIGHT	GSA	DLA
ISU® 90	86019-007	ISU® 90AA CABINET 10-DRAWER	1,002 lbs.	•	
	86019-008	ISU® 90AB CABINET 9-DRAWER	970 lbs.		
	86019-009	ISU® 90AC CABINET 8-DRAWER	916 lbs.	•	
	86019-010	ISU® 90AD CABINET 7-DRAWER	867 lbs.	•	
	86019-011	ISU® 90AE CABINET 6-DRAWER	817 lbs.	•	
	86019-012	ISU® 90AF CABINET 5-DRAWER	733 lbs.		

DIMENSIONS	
FOR BASE UNIT WITH DRAWERS	45"W X 27 3/4"D X 59 1/8"H
FOR OVERHEAD STORAGE CABINET	45"W X 27 3/4"D X 20 3/4"H
FULL DIMENSIONS	45"W X 27 3/4"D X 79 7/8"H

CONTAINER	PART #	DESCRIPTION	WEIGHT	GSA	DLA
ISU® 60	86019-013	ISU® 60AG CABINET 8-DRAWER	726 lbs.		
DIMENSIONS					
FULL DIMENSIONS	45"W X 27 3/4"D X 44 3-16"H				

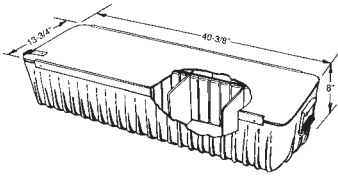
Storage Cabinet Quick-Attachment Installation Kit (required)

PART #	DESCRIPTION	INSTALLATION	WT	GSA	DLA
60205-001	CABINET INSTALLATION KIT	FACTORY	22.6 lbs.		
60205-002	CABINET INSTALLATION KIT NSN: 8145-01-486-2462	CUSTOMER/ FIELD	22.6 lbs.	•	•

- High-density storage - condenses and organizes roughly 2 to 4 ISU's worth of shelved parts into one container
- Every item within a cabinet has its own special storage location
- Cabinets designed to reduce retrieval time, eliminating typical container stuffing
- Adjustable drawers (3/4" intervals) and shelves offer interchangeability needed for full or partial mission deployments
- Inventory protected from dirt, dust, and damage - keeping mission-sensitive parts clean and combat ready
- Base cabinets include an integral pallet base, which is easy to lift and move with a forklift
- Each cabinet requires a Quick Attachment Installation Kit



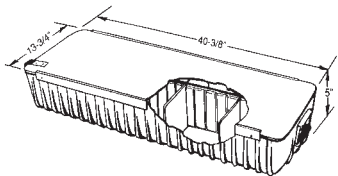
ISU® 8" STORAGE TRAYS



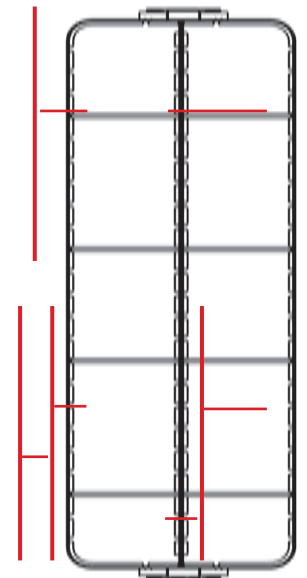
P/N	NSN	DESCRIPTION	GSA	DLA
50069-000	8145-01-387-0007	8" TRAY EMPTY WITH COVER	●	●
50069-001	8145-01-429-4965	8" STANDARD TRAY W/1 FULL LENGTH PARTITION & 8 HALF WIDTH DIVIDERS	●	
50069-102	8145-01-390-4409	FULL LENGTH PARTITION	●	●
50069-202	8145-01-390-1350	HALF WIDTH DIVIDER	●	●
50069-203	8145-01-385-7344	1/3 WIDTH SIDE DIVIDER	●	●
50069-204	8145-01-385-7295	1/3 WIDTH CENTER DIVIDER	●	●
50069-205	8145-01-385-7410	2/3 WIDTH SIDE DIVIDER	●	●
50069-206	8145-01-385-7437	FULL WIDTH DIVIDER	●	●
50069-207	8145-01-394-3466	1" DICED POLYURETHANE FOAM		
50069-307	8145-01-394-5733	POLYURETHANE FOAM, ANTI-STATIC	●	●
DIMENSIONS		WEIGHT	MAX TRAY CAPACITY	
40.38"L X 13.75"W X 8"D		37 lbs.	250 lbs.	

- Trays stored on any type of shelf in any ISU® Containers
- Convenient carrying handle on each end of tray
- Velcro closure strap to secure lid
- Lightweight and durable
- Multiple configurations available with or without partitions for storage of different sized items
- Partitions removable
- Full sliding lid for easy access to stored parts
- Tray can be filled with foam to protect fragile items

ISU® 5" STORAGE TRAYS



P/N	NSN	DESCRIPTION	GSA	DLA
50070-000	8145-01-390-4411	5" TRAY EMPTY WITH COVER	●	●
50070-001	8145-01-429-4964	5" STANDARD TRAY W/1 FULL LENGTH PARTITION & 8 HALF WIDTH DIVIDERS	●	
50070-102	8145-01-385-7485	FULL LENGTH PARTITION	●	●
50070-202	8145-01-385-7500	HALF WIDTH DIVIDER	●	●
50070-203	8145-01-390-1349	1/3 WIDTH SIDE DIVIDER	●	●
50070-204	8145-01-390-1346	1/3 WIDTH CENTER DIVIDER	●	●
50070-205	8145-01-390-1347	2/3 WIDTH SIDE DIVIDER	●	●
50070-206	8145-01-390-1348	FULL WIDTH DIVIDER	●	●
50070-207	8145-01-394-3467	1" DICED POLYURETHANE FOAM		
50070-307	8145-01-394-5734	POLYURETHANE FOAM, ANTI-STATIC		
DIMENSIONS		WEIGHT	MAX TRAY CAPACITY	
40.38"L X 13.75"W X 5"D		31 lbs.	250 lbs.	

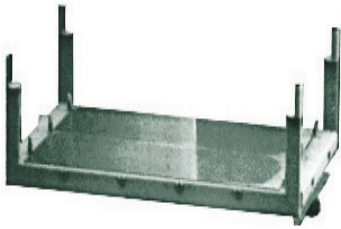


WEAPONS RACKS



P/N	NSN	DESCRIPTION	DIMENSIONS	WT.	GSA	DLA
60042-001	8145-01-390-4410	GUN RACK, M-16 (7-GUN)	19.00"W X 40.25"H X 7.65"D	19.5	●	●
60042-002	8145-01-385-7524	GUN RACK, M-16 (6-GUN)	16.25"W X 40.25"H X 7.65"D	18.2	●	●
60042-003		GUN RACK, M-4 (7-GUN)	19.00"W X 40.25"H X 7.65"D	20.8	●	
60042-004		GUN RACK, M-4 (6-GUN)	16.25"W X 40.25"H X 7.65"D	19.3	●	
60050-001		GUN RACK, M-60 (3-GUN)	10.50"W X 50.00"H X 10.50"D	27.6		●
60073-001	8145-01-423-0714	GUN RACK, M249 (4-GUN)	19.25"W X 41.75"H X 9.30"D	41.4	●	●
60128-001	8145-01-423-0715	GUN RACK, M-2 50 CALIBER (1-GUN)	10.00"W X 42.50"H X 1.00"D	11.8	●	●
60135-001	8145-01-423-0712	GUN RACK, MK-19 (4-GUN)	45.25"W X 40.25"H X 12.00"D	77.4	●	●
60042-007		GUN RACK, M240 (3-GUN)	25.00"W X 50.00"H X 10.50"D	31.0		
60415-001		GUN RACK, M134 MOUNTED (2-GUN)	30.50"W X 41.31"H X 15.50"D	25.6		
60415-002		GUN RACK, M134 MINI-GUN (2-GUN)	31.00"W X 42.12"H X 14.50"D	56.3		

- Efficient organization and secure storage of guns during transport and at forward location
- Weapons racks will work in standard ISU® 90EO containers as well as ISU® 90 High Security Containers
- See Pre-Configured Weapons Room kits on page 2.5.1-2.5.3 or call your regional sales rep (see contacts on page 7.1.1)



ISU® M720/832 MOBILIZER ADAPTER

P/N	NSN	DIMENSIONS	GSA	DLA
60027-001	8145-01-486-2443	123.5"L X 88"W X 33.6"H	●	●
TARE WEIGHT		CAPACITY		
1,500 lbs.		12,000 lbs.		

- For use with unit-owned M720/832 Mobilizer
- Attachment points provided for standard 463L configured loads
- 7,500 lb. capacity cargo tie-down rings around periphery
- Non-skid tread plate floor
- Carries one fully loaded ISU® Container, Intex Pallet, or standard 463L Pallet



ISU® KC STACKING RACKS

P/N	NSN	GSA	DLA
60210-001 (black only)	8145-01-468-4114	●	●
DIMENSIONS		108"W X 84.5"L X 22.25"H	

STACKING RACKS

- For improved storage and rapid deployment of KC-Series Containers (ISU® 70KC/KCA, ISU® 90KC/KCA)
- Allows stacking of two KC-Series Containers
- Optimizes space management



ISU® TIRE RACKS

P/N	NSN	GSA	DLA
60041-002 Standard Kit - 108"W (two required per side - one kit fits in one quadrant)	8145-01-391-3816	●	●
60041-003 ISU® 90EO - 88"W		●	

- Racks are adjustable and mount to ISU® Container shelf tracks
- Racks have design capabilities to interface with all military aircraft tires
- Racks will hold tires for most types of military vehicles
- Racks are available for both full-size and half-size ISU® Containers

NOTE: Other configurations of ISU® Tire Racks are available upon request



SEAL DOOR 3/4"

P/N	NSN	DESCRIPTION	GSA	DLA
60005-001	8145-01-467-6609	Inside Mounting Area 75.34" x 41.25"; 3.9 lbs.	●	●

CONTAINER ACCESSORIES

STEP 3: Pick Your Accessories

HAZMAT ACCESS PANEL



P/N	DESCRIPTION	INSTALLATION	GSA	DLA
60105-001	HAZMAT ACCESS PANEL NSN: 8145-01-467-6555	FIELD	•	•
60105-002	HAZMAT ACCESS PANEL KC Containers Only	FACTORY		
60105-005	HAZMAT ACCESS PANEL Non-KC Containers	FACTORY		
WEIGHT		DIMENSIONS		
50 lbs.		25.25" H X 27.25" W		

Air Force Joint Service Manual 24-204, Chapter 11, Attachment 21, replaces AFM71-4 and states the following: "If a container can be accessed in flight, i.e. with the use of hazardous material panel, it is permissible to airlift hazardous material in an ISU® Container"

For more information, please read Regulation 24-404, or reference your appropriate Service Manual: TM38-250 - U.S. Army; 505 - U.S. Navy; MCOP4030.19.F - U.S.M.C.; DLA AM4145.3 - For other DoD users

ISU® CARGO RESTRAINT NETS



P/N	NSN	DESCRIPTION	GSA	DLA
40492R4SSISUS		ISU® SHELF CARGO RESTRAINT NET (86060-030) DIMENSIONS: 40"x 49"	•	
60177-005	3940-01-555-0588	SHELF BRACKET HARDWARE KIT (4 brackets 86015-506) with Shelf Cargo Restraint Net (86060-030)	•	
401032R6SSISUF		ISU® FLOOR CARGO RESTRAINT NET (86060-035) DIMENSIONS: 40"x 103"	•	
60177-006		6/E CARGO RING HARDWARE KIT (field installed) (8 tie-down rings) with Floor Cargo Restraint Net	•	
80842R8CATVT		ISU® 65I ATV TOP RESTRAINT NET DIMENSIONS: 80"x 84"	•	
64962R6CATVF		ISU® 65I ATV FLOOR RESTRAINT NET DIMENSIONS: 64"x 96"	•	
AAR80842R15SS		HMMWV CONTAINER CARGO SOFT TOP RESTRAINT NET	•	
AAR54482R18SS		HMMWV CONTAINER HARDSHELL LID NET	•	

ISU® REPAIR KIT



P/N	NSN	GSA	DLA
60085-001	8145-01-391-3853	•	
DIMENSIONS		WEIGHT	
50.50"L X 14"W X 6"H		50 lbs. packed	

- Repair Kit furnished with the necessary materials for general repair of ISU® Containers
- See list of materials below for full description
- Refer to container technical manual for specific repair instructions



QTY	DESCRIPTION	QTY	DESCRIPTION
1	STAPLES, 1/2", 1250 COUNT	1	PIG PUTTY
1	STAPLER, HEAVY DUTY	1	WRENCH, COMBINATION/SWIVEL, 9/16"
1	PLIERS, 6"	1	WRENCH, COMBINATION 9/16"
4	HAZMAT DOOR SEALS	1	WRENCH, ADJUSTABLE 10"
20	DOOR SEAL, 5/8" WIDE	1	SCREW DRIVER, PHILLIPS, 4", #2
1	RETRACTABLE KNIFE	1	SCREW DRIVER, FLAT TIP, 8"
20	SHELF BRACKETS	4	BOLT, 3/8-16 NC, 3" LONG
1	RATCHET STYLE CAULKING GUN	4	NUT, 3/8-16 NC
1	SANDING BLOCK KIT	4	WASHER, FLAT 3/8
1	PUTTY KNIFE, 1 1/4" WIDE	200	RIVETS, 3/16, COUNTERSINK, DRIVE
1	DOUBLE BLADED PAINT SCRAPER	2	PILOTED COUNTERSINK
1	WALL SCRAPER, 3" STIFF BLADE	4	DRILL BIT, #11, HSS
1	MASKING TAPE, 2" WIDE X 60 YARDS	1	HAMMER, BALL PEEN, 16 OZ. WOOD

ISU® MEZZANINE SYSTEM



P/N	NSN	DESCRIPTION	GSA	DLA
50120-002	8145-01-484-2916	ISU MEZZANINE SET (secures through forklift tubes)		
50120-201	8145-01-478-0650	DECK (Sold Separately)		
50120-202	8145-01-478-0688	STAIRWAY (Sold Separately)		

- 4-ft. X 8-ft. aluminum reinforced platform
- Light weight aluminum construction
- 1500 lb. capacity
- Eliminates need for fixed warehouse mezzanine system
- Setup with a standard warehouse forklift
- Deployable warehouse can be set up like home station
- Designed for maximum setup configuration with multiple stairway and rail mounting brackets
- Designed for the 56000 Series ISU® Containers and the LAMS/ELAMS Shelter Systems
- Supports two-high complexing of shelters and containers with entry and exit points using additional platforms and stairs
- Four man set-up
- Three location stair placement
- Light weight modular construction for easy deployment
- Reduces deployed warehouse space requirements by up to 50 percent

ISU® DOOR ASSEMBLIES



P/N	NSN	DESCRIPTION	COLOR	GSA	DLA
60460-001	8145-01-486-2476	Door Assemblies RH 4-Way Gen X Container 56000 Series	GREEN	•	•
60460-002	8145-01-486-2487	Door Assemblies LH 4-Way Gen X Container 56000 Series	GREEN	•	•
60460-032	8145-01-652-7334	Door Assemblies RH 4-Way Gen X Container 56000 Series	TAN	•	•
60460-033	8145-01-652-7341	Door Assemblies LH 4-Way Gen X Container 56000 Series	TAN	•	•

TIE-DOWN RINGS



P/N	INCLUDES	GSA	DLA
60177-001	16 TIE-DOWN RINGS		
60177-002	8 TIE-DOWN RINGS		
PAYLOAD CAPACITY			
1,600 lbs. maximum			

CONTAINER ACCESSORIES

STEP 3: Pick Your Accessories



LOW SPEED MOBILITY WHEEL SET (LSMWS)

- Provides towed transport for ISU® Containers and 463L compatible pallets
- Can be used as transport air-loading device
- Qualified for all terrain operations
- Parking brakes: individual hand-operated cable brakes (rear)
- Not designed for highway use
- Towable by vehicle equipped with pintle-type hitches
- Hydraulic lift system that uses military 24 volt prime-mover power
- Removable tongue for airlift operations

LOAD CAPACITY	TARE WEIGHT	GROSS AXLE WEIGHT RATING	MAXIMUM SPEED
12,000 lbs.	1,350 lbs.	8,000 lbs. (front & rear)	10 MPH
STANDARD ELECTRICAL SYSTEM			
24 VDC compatible with military 2.5-ton and 5-ton prime movers			

P/N	NSN	DESCRIPTION	GSA	DLA
60055-003	8145-01-394-5464	LSMWS WITH 88" SUPPORT BEAMS 86.00 TRACK GREEN		
60055-004	8145-01-394-5463	LSMWS WITH 108" SUPPORT BEAMS 86.00 TRACK GREEN		
60190-002	8145-01-394-8083	LSMWS SUPPORT BEAM 108"	•	•
60190-001	8145-01-394-8084	LSMWS SUPPORT BEAM 88"		

FOLDING STEPS

P/N	NSN	DESCRIPTION	GSA	DLA
86003-001	8145-01-486-2500	RETRACTABLE FOLDING STEP	•	•

