

Hardside Expandable Light Air-Mobile Shelter (HELAMS)



HELAMS being expanded to full size; HELAMS front and back.

P/N: 58204-001 Forest Green

NSN: 8145-01-507-8684

P/N: 58204-002 Desert Sand

NSN: 8145-01-507-8115

P/N: 58204-003 Mark V configuration

Dimensions:

Stowed:

Exterior: 178"L x 96"W x 96"H

Interior: 168"L x 85"W x 87"H

Floor: 99 sq. ft.

Deployed:

Exterior: 178"L x 268" W x 96" W

Interior: 168"L x 255"W x 87"H

Floor: 297 sq. ft.

Weight (empty): 5,500 lbs. (-001, -002)
6,150 lbs. (-003)

Max. Tare Weight:

Internal Air Transport (IAT): 15,000 lbs.

External Air Transport (EAT): 15,000 lbs.

MIL-STD-209K (Rail): 11,000 lbs.

Airlift Certified: 

Helicopter Sling Certifiable: 

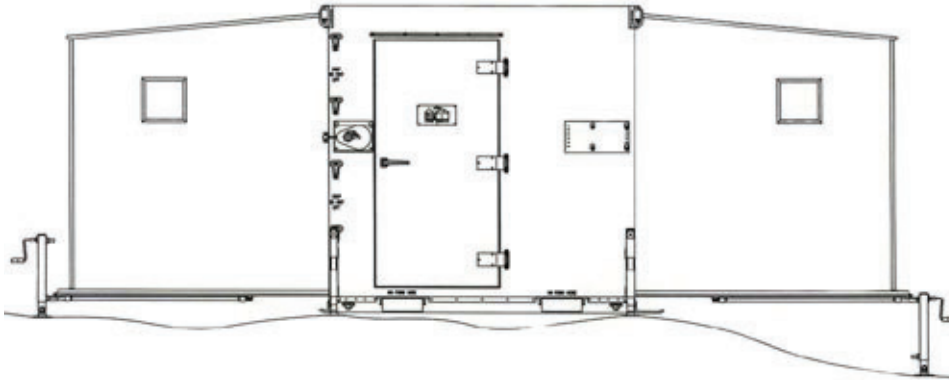
Features:

- Slide-in/slide-out 36,000 BTU Environmental Control Unit (ECU)
- Standard three phase electrical (with 25 foot power cord)
- Four hard-mounted MS lights in center section
- Eight windows, 12" x 12", with blackout shade
- One removable winch assembly per side to lower the side wall assembly
- Four main leveling jacks and six side leveling jacks
- Mobility wheel set hook-up provisions
- Rubber membrane threshold system
- All interior surfaces painted white
- Standard tie down pattern in floor for cargo restraint
- Detachable 463L detent rails

AAR's ELAMS softside shelter is available on page 5-3.

5-4a

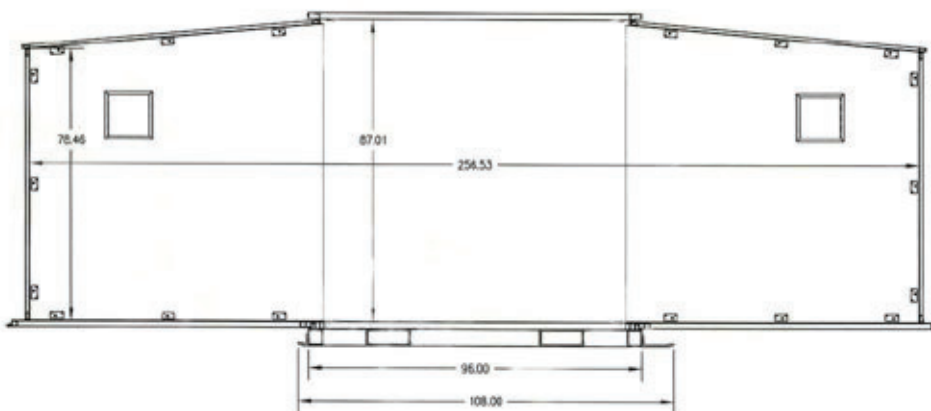
Hardside Expandable Light Air-Mobile Shelter (HELAMS)



End View With Both Sides Deployed.

Optional Equipment:

- 60,000 BTU Environmental Control Unit
- High Speed Mobility Wheel Set (HSMWS)
- Helicopter Sling Kit - 6/E style tie down rings
- Safety Kit with first aid, fire axe, fire extinguisher and flashlight
- Extension drop tube for leveling jacks for truck use
- Extra winch assembly, strut storage hangers, MS electric connectors
- Communication panel (populated or unpopulated)



Typical Cross Section of Shelter With Both Sides Deployed.