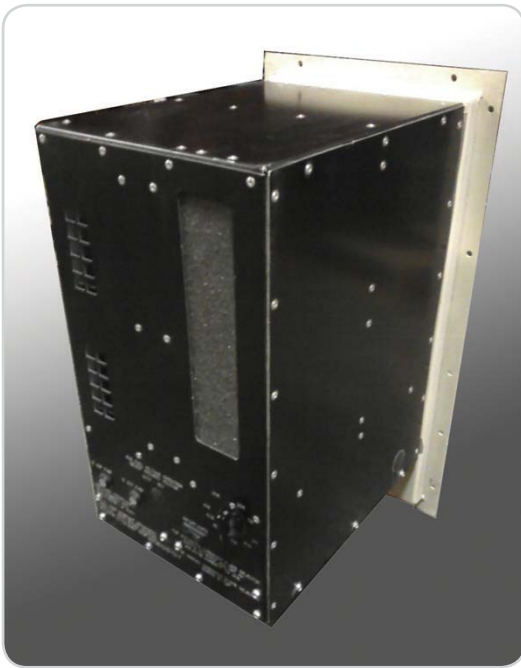


Dehumidification Units



P/N: 60398-001, Factory Installed

For the following container P/Ns:

56x06 ISU60 EO 3 DR
56X20 ISU90KC
56X33 ISU90KCI
56X35 ISU72I 4 DR
56X50 ISU70KC
56X79 ISU96 ATV
56X88 ISU70KCA
56X94 ISU 65I ATV

P/N: 60389-008, Factory Installed

For all other containers

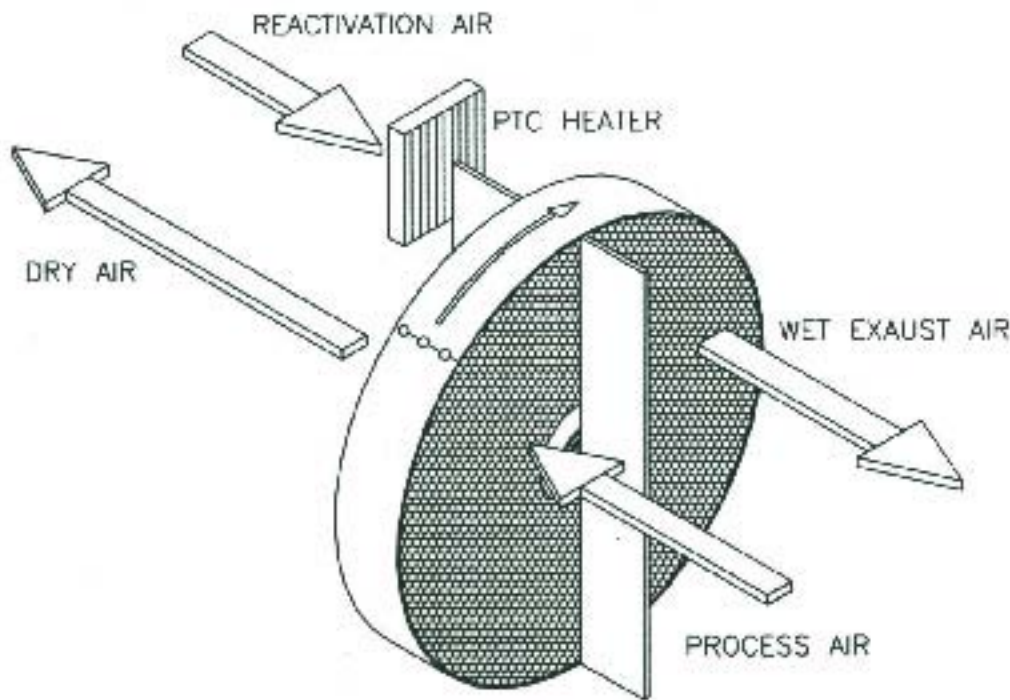
P/N: 60398-002, Field/Customer Installed

NSN: 8145-01-484-2922

Features:

- Include a small drive motor and belt to rotate the wheel, an integral humidistat, and a customized printed circuit board.
- Compact design – 17.25” x 12.5” x 9.63” and weighs only 27 lbs.
- High capacity – delivers 50 scfm and removes 28.6 lbs. of H₂O/24 hrs. at 90°F
- Solid construction – built with rugged formed aluminum anodized panels
- Utilities – the unit can be configured for 115v/60Hz or 220v 50/60Hz. 1-Phase. Power required: .935kW
- Control panel – simple on-off auto switch with integral humidistat control
- Accessories available – surface mounting pan, duct transition adapter, light weight flexible duct and heavy duty power cord
- Requires 2 air filters

Dehumidification Units



High capacity desiccant dehumidification wheel illustration.

Principle Of Operation:

The operation of the AAR Dehumidification Unit is based on two counter current air streams flowing through the wheel. Return air from the conditioned space is drawn through the rotating desiccant wheel. The desiccant absorbs moisture from the air stream and the dry supply air is returned to the conditioned space. The moisture containing portion of the wheel rotates into the regeneration air stream which is then exhausted to the outside.

Capabilities:

The AAR dehumidification unit produces dry air by controlling humidity below levels at which moisture condenses on surfaces – to prevent corrosion and mold/ mildew formation, increase readiness, reduce maintenance and improve Mean Time Between Failure (MTBF) for electronic systems.

Utilizing the proprietary desiccant dehumidification wheel (shown on back page), a PTC electric resistance heater is used for regeneration. Low speed/low noise compact blowers are used to move, supply and regenerate air throughout the unit.